

PINE LAKE

Tentative Plan showing Proposed
Bareland Condominium
of Part of

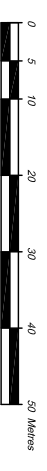
**PLAN 102 4244,
BLOCK 1, LOT 12**

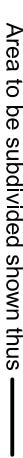
all within

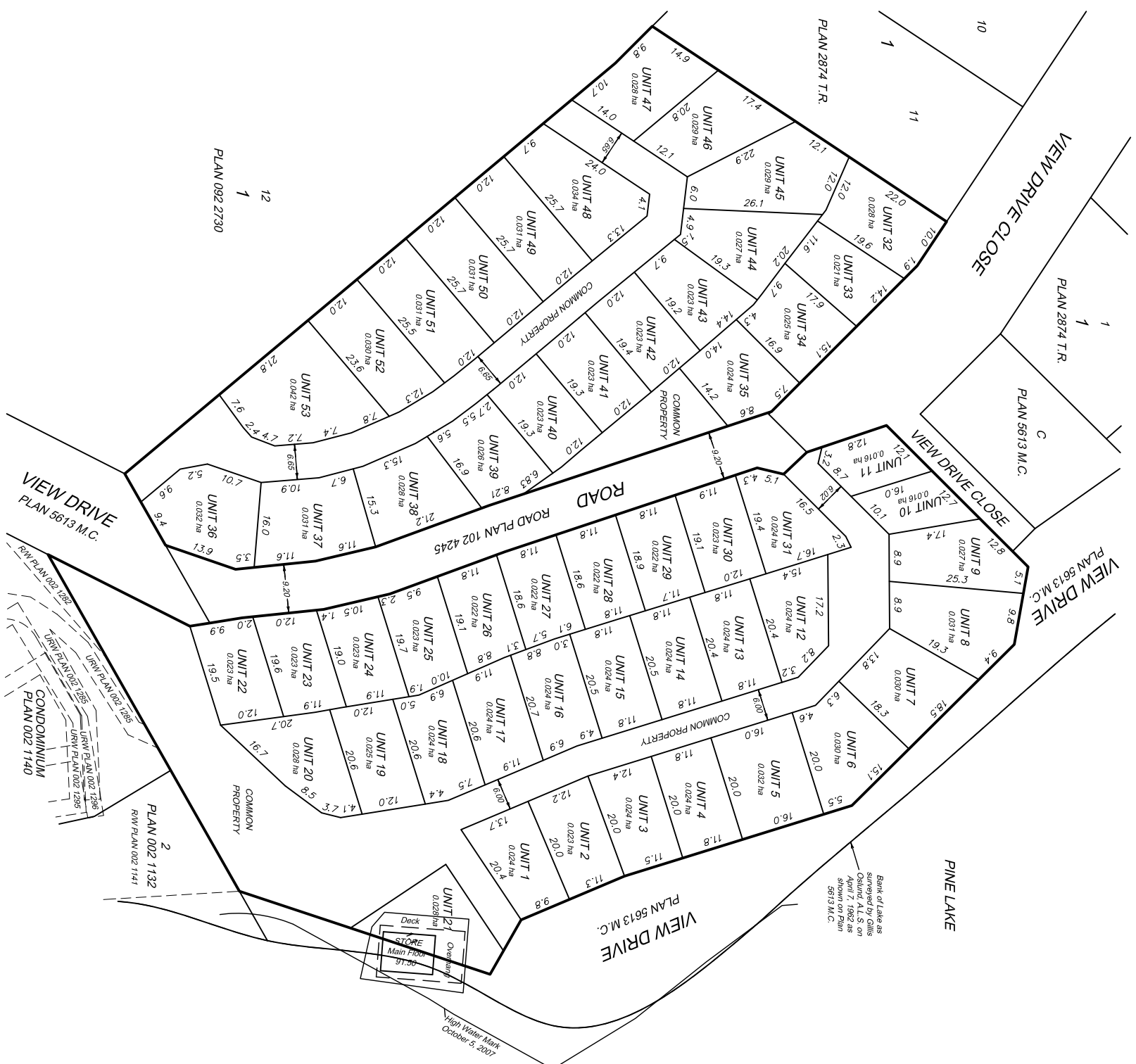
**N.1/2 Sec.12
Twp.36 Rge. 25 W.4 Mer.**

RED DEER COUNTY, ALBERTA

Scale: 1:1000



Area to be subdivided shown thus  and contains 53 Bareland Condominium Units and is approximately 1.76 hectares in 2 parts.
All dimensions are in metres and decimals thereof.



Original Submission Date:

Last Revision Date (if): July 15, 2010

Project Number: 020100097-110

Drawing Number: 020100097-110-TLP-14

FOCUS

Phone: (780) 465-4555
Fax: (780) 491-1597
Suite 1000, 9825 - 103 Street
Edmonton, Alberta T5C 2S8